



## Kvaser Mini PCI Express HS v2 User's Guide



Copyright 2017-2024 Kvaser AB, Mölndal, Sweden  
<https://www.kvaser.com>

Printed Wednesday 18<sup>th</sup> September, 2024

We believe that the information contained herein was accurate in all respects at the time of printing. Kvaser AB cannot, however, assume any responsibility for errors or omissions in this text. Also note that the information in this document is subject to change without notice and should not be construed as a commitment by Kvaser AB.

(This page is intentionally left blank.)

## Contents

<b>1</b>	<b>About this manual</b>	<b>4</b>
<b>2</b>	<b>Introduction</b>	<b>5</b>
2.1	Welcome to Kvaser Mini PCI Express HS v2 . . . . .	5
2.2	Major features . . . . .	6
2.3	Interface . . . . .	6
2.4	Additional software and documentation . . . . .	6
<b>3</b>	<b>Kvaser Mini PCI Express HS v2 hardware</b>	<b>7</b>
3.1	Hardware installation . . . . .	7
3.2	Mini PCI Express connection . . . . .	7
3.3	CAN channels . . . . .	7
3.4	Power supply . . . . .	8
3.5	LED Indicators . . . . .	8
3.6	Troubleshooting . . . . .	8
<b>4</b>	<b>Appendices</b>	<b>9</b>
4.1	Technical data . . . . .	9
4.2	CAN connectors . . . . .	9
4.3	CAN bus termination . . . . .	10
4.4	Updating the firmware . . . . .	10
<b>5</b>	<b>Safety Instructions</b>	<b>12</b>
5.1	Intended Use . . . . .	12
5.2	Usage Warning . . . . .	12
<b>6</b>	<b>Disposal and Recycling Information</b>	<b>13</b>
<b>7</b>	<b>Legal acknowledgements</b>	<b>15</b>
7.1	EU Regulatory Compliance . . . . .	15
7.2	FCC Regulatory Compliance . . . . .	16
7.3	Patents, Copyrights and Trademarks . . . . .	17
<b>8</b>	<b>Document Revision History</b>	<b>18</b>

## **1 About this manual**

This manual is intended for Kvaser Mini PCI Express HS v2 users. This document contains a description of the hardware's properties and general instructions for connecting the device to a computer.

## 2 Introduction

This section will describe the functions and features of the Kvaser Mini PCI Express HS v2.

### 2.1 Welcome to Kvaser Mini PCI Express HS v2

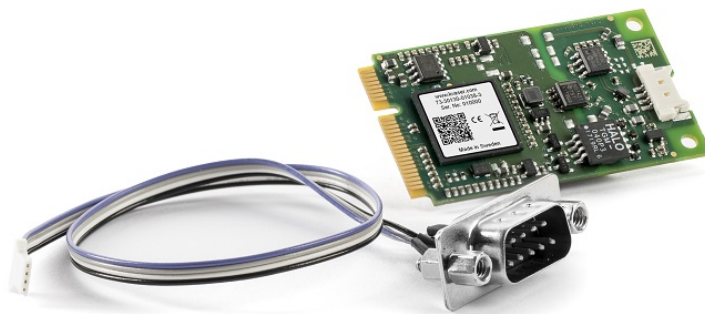


Figure 1: Kvaser Mini PCI Express HS v2

Kvaser Mini PCI Express HS v2 is a small, yet advanced, real time CAN interface that handles transmission and reception of standard and extended CAN messages on the bus with a high time stamp precision. The Kvaser Mini PCI Express HS v2 is compatible with applications that use Kvaser's CANlib.

This guide applies to Kvaser Mini PCI Express HS v2 devices listed in Table 1.

Device	Product Number (EAN)
Kvaser Mini PCI Express HS v2	73-30130-01038-3

Table 1: Kvaser Mini PCI Express HS v2 devices and their product numbers.

## 2.2 Major features

- Mini PCI Express CAN interface.
- Supports CAN FD, up to 8 Mbit/s (with correct physical layer implementation).
- Quick and easy plug-and-play installation.
- Supports both 11-bit (CAN 2.0A) and 29-bit (CAN 2.0B active) identifiers.
- 100 % compatible with applications written for other Kvaser CAN hardware with Kvaser CANlib.
- High-speed CAN connection (compliant with ISO 11898-2), up to 1 Mbit /s.
- Fully compatible with J1939, CANopen, NMEA 2000 and DeviceNet.
- Supports silent mode for analysis tools – listen to the bus without interfering.
- Supports simultaneous usage of multiple Kvaser interfaces.

## 2.3 Interface

Kvaser Mini PCI Express HS v2 provides a CAN bus interface through a Mini PCI Express interface.

## 2.4 Additional software and documentation

The Kvaser CANlib SDK includes everything you need in order to develop software applications interacting with Kvaser CAN and LIN hardware. The SDK contains full documentation and many sample programs, written in C, C++, C#, Delphi, Python and Visual Basic. Kvaser CAN and LIN hardware is built around the same common software API. Applications developed using one device type will run without modification on other device types.

The latest versions of documentation, software and drivers can be downloaded for free at [www.kvaser.com/download](http://www.kvaser.com/download).

## 3 Kvaser Mini PCI Express HS v2 hardware

In this section you can read more about the CAN channels and power supply.

### 3.1 Hardware installation

The Kvaser Mini PCI Express HS v2 may be inserted in any free Mini PCI Express slot on the host computer. You do need to switch the power off before inserting or removing the device. For the Kvaser Mini PCI Express HS v2 to communicate with the host computer, compatible versions of the Kvaser driver and firmware must be used. The firmware is downloaded and installed directly on the Kvaser Mini PCI Express HS v2. The driver is installed on the host computer.

The latest version of the drivers, `kvaser_drivers_setup.exe`, and firmware can be downloaded from [www.kvaser.com/download](http://www.kvaser.com/download).

### 3.2 Mini PCI Express connection



Figure 2: Mini PCI Express connector

The Kvaser Mini PCI Express HS v2 is a Card of type F2 (Full-Mini with bottom side keep outs).

### 3.3 CAN channels

The Kvaser Mini PCI Express HS v2 has a single CAN channel in a 4-pin Molex connector (see Figure 3 on Page 8), see Section 4.2, CAN connectors, on Page 9 for pinout information.

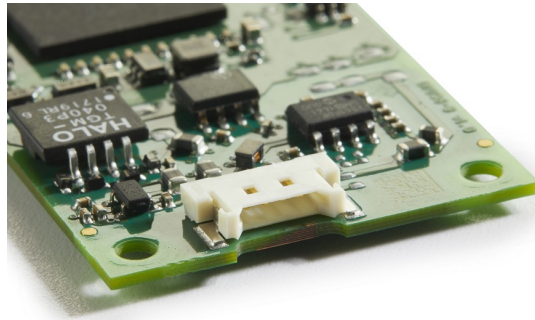


Figure 3: CAN connector on Kvaser Mini PCI Express HS v2

### 3.4 Power supply

The Kvaser Mini PCI Express HS v2 is only powered using +3.3 V from the Mini PCI Express connector.

### 3.5 LED Indicators

The Kvaser Mini PCI Express HS v2 has no LED indicators.

### 3.6 Troubleshooting

Use “Kvaser Device Guide” in the Control Panel to verify that the computer can communicate with the Kvaser Mini PCI Express HS v2. If the firmware version shown is all zeros, there are communication problems.



## 4 Appendices

In this section you will find technical information about the Kvaser Mini PCI Express HS v2 and its connectors.

### 4.1 Technical data

In Table 2 below you will find the technical specifications of Kvaser Mini PCI Express HS v2.

CAN Channels	1
CAN Transceivers	MCP2561FD (Compliant with ISO 11898-2)
CAN Controller	Kvaser CAN IP in FPGA
Galvanic isolation	Yes
CAN Bit Rate	20 kbit/s to 1 Mbit/s
CAN FD Bit Rate	Up to 8 Mbit/s (with correct physical layer implementation)
Time stamp resolution	1 $\mu$ s
Max message rate	20000 msg/s per channel
Error Frame Detection	Yes
Error Frame Generation	Yes
Silent mode	Yes
Kvaser t programming	No
Kvaser CANtegrity	No
Host interface	Mini PCI Express, type F2 (i.e. full-Mini with bottom side keep outs)
Host OS	Windows (7 or later), Linux.
Power consumption	Typically 700 mW idle plus max 150 mW per channel, i.e. max 850 mW for a single channel interface. Only uses 3.3 V.
Hardware configuration	Done by software.
Dimensions	51 x 30 x 5 mm
Weight	5 g (13 g including cable)
Operating temperature	-40 °C to +85 °C
Storage temperature	-40 °C to +85 °C
Relative humidity	0 % to 85 % (non-condensing.)

Table 2: Technical Specifications.

### 4.2 CAN connectors

Kvaser Mini PCI Express HS v2 devices that use the 4-pin Molex connector (53780-0470) have the pinning described in Table 3 on Page 10.

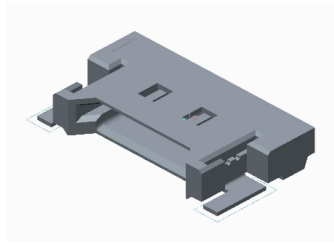


Figure 4: Molex Connector 53780-0470

Molex pin number	D-SUB 9	Function
1	3	GND
2	7	CAN_H
3	2	CAN_L
4	5	Shield

Table 3: Molex pin configuration

### 4.3 CAN bus termination

Every CAN bus must be terminated with a 120 Ohm resistor at each end of the bus. The Kvaser Mini PCI Express HS v2 does not contain any CAN bus termination, because their inclusion could cause severe disturbance in a system which is already correctly terminated.

For laboratory or testing use, the exact value of the termination resistors is not always critical. Sometimes a single terminator is sufficient. For production, proper termination is essential. If you see error frames on the bus, you should check the termination.



**To save yourself a lot of trouble, always terminate the CAN bus properly.**

### 4.4 Updating the firmware

For the Kvaser Mini PCI Express HS v2 to communicate with the host computer, compatible versions of the Kvaser CANlib (including driver) and firmware or SocketCAN Device Drivers must be installed.

The latest versions of firmware and drivers can be downloaded for free at [www.kvaser.com/download](http://www.kvaser.com/download).

Connect the Kvaser Mini PCI Express HS v2 to your host computer.

For Linux based operating systems, instructions for how to update the firmware when using Kvaser CANlib can be found in the README in the kvflash directory.

The corresponding instructions for SocketCAN are found in the kvflash-mmap directory. Read and follow the README carefully. Note: when updating PCIEcan, a complete shutdown of the computer is required in order to power cycle the device.

Use the example utility 'listChannels' in Kvaser CANlib to check the current firmware version.

If your computer is running Windows, start the update.exe application. A window opens showing the Firmware Update Instructions; read and follow those carefully.

To check the current firmware version for a computer running Windows, open "Kvaser Device Guide" which can be found in the Control Panel. Select "Kvaser Mini PCI Express HS v2" in the tree view to the left, and click on the channel. The firmware revision information now appears in the right half of the window.

## 5 Safety Instructions

### 5.1 Intended Use

Kvaser interfaces are used to connect computer systems to CAN buses. The Kvaser Mini PCI Express HS v2 is intended for connection to a computer via an available Mini PCI Express slot.

### 5.2 Usage Warning



#### **WARNING FOR ALL USERS**

WARNING! - YOUR USE OF THIS DEVICE MUST BE DONE WITH CAUTION AND A FULL UNDERSTANDING OF THE RISKS!

THIS WARNING IS PRESENTED TO INFORM YOU THAT THE OPERATION OF THIS DEVICE MAY BE DANGEROUS. YOUR ACTIONS CAN INFLUENCE THE BEHAVIOR OF A CAN-BASED DISTRIBUTED EMBEDDED SYSTEM, AND DEPENDING ON THE APPLICATION, THE CONSEQUENCES OF YOUR IMPROPER ACTIONS COULD CAUSE SERIOUS OPERATIONAL MALFUNCTION, LOSS OF INFORMATION, DAMAGE TO EQUIPMENT, AND PHYSICAL INJURY TO YOURSELF AND OTHERS. A POTENTIALLY HAZARDOUS OPERATING CONDITION IS PRESENT WHEN THE FOLLOWING TWO CONDITIONS ARE CONCURRENTLY TRUE: THE PRODUCT IS PHYSICALLY INTERCONNECTED TO A REAL DISTRIBUTED EMBEDDED SYSTEM; AND THE FUNCTIONS AND OPERATIONS OF THE REAL DISTRIBUTED EMBEDDED SYSTEM ARE CONTROLLABLE OR INFLUENCED BY THE USE OF THE CAN NETWORK. A POTENTIALLY HAZARDOUS OPERATING CONDITION MAY RESULT FROM THE ACTIVITY OR NON-ACTIVITY OF SOME DISTRIBUTED EMBEDDED SYSTEM FUNCTIONS AND OPERATIONS, WHICH MAY RESULT IN SERIOUS PHYSICAL HARM OR DEATH OR CAUSE DAMAGE TO EQUIPMENT, DEVICES, OR THE SURROUNDING ENVIRONMENT.

WITH THIS DEVICE, YOU MAY POTENTIALLY:

- CAUSE A CHANGE IN THE OPERATION OF THE SYSTEM, MODULE, DEVICE, CIRCUIT, OR OUTPUT.
- TURN ON OR ACTIVATE A MODULE, DEVICE, CIRCUIT, OUTPUT, OR FUNCTION.
- TURN OFF OR DEACTIVATE A MODULE, DEVICE, CIRCUIT, OUTPUT, OR FUNCTION.
- INHIBIT, TURN OFF, OR DEACTIVATE NORMAL OPERATION.
- MODIFY THE BEHAVIOR OF A DISTRIBUTED PRODUCT.
- ACTIVATE AN UNINTENDED OPERATION.
- PLACE THE SYSTEM, MODULE, DEVICE, CIRCUIT, OR OUTPUT INTO AN UNINTENDED MODE.

ONLY THOSE PERSONS WHO:

- (A) ARE PROPERLY TRAINED AND QUALIFIED WITH RESPECT TO THE USE OF THE DEVICE,
- (B) UNDERSTAND THE WARNINGS ABOVE, AND
- (C) UNDERSTAND HOW THIS DEVICE INTERACTS WITH AND IMPACTS THE FUNCTION AND SAFETY OF OTHER PRODUCTS IN A DISTRIBUTED SYSTEM AND THE APPLICATION FOR WHICH THIS DEVICE WILL BE APPLIED, MAY USE THE DEVICE.

PLEASE NOTE THAT YOU CAN INTEGRATE THIS PRODUCT AS A SUBSYSTEM INTO HIGHER-LEVEL SYSTEMS. IN CASE YOU DO SO, KVASER AB HEREBY DECLARES THAT KVASER AB'S WARRANTY SHALL BE LIMITED TO THE CORRECTION OF DEFECTS, AND KVASER AB HEREBY EXPRESSLY DISCLAIMS ANY LIABILITY OVER AND ABOVE THE REFUNDING OF THE PRICE PAID FOR THIS DEVICE, SINCE KVASER AB DOES NOT HAVE ANY INFLUENCE ON THE IMPLEMENTATIONS OF THE HIGHER-LEVEL SYSTEM, WHICH MAY BE DEFECTIVE.

## 6 Disposal and Recycling Information



When this product reaches its end of life, please dispose of it according to your local environmental laws and guidelines.

For information about Kvaser's recycling programs, visit:  
<https://www.kvaser.com/en/kvaser/recycling-policy.html>



## 7 Legal acknowledgements

### 7.1 EU Regulatory Compliance



#### EU Declaration of Conformity (DoC)

We

Company Name:	Kvaser AB	City:	Mölndal
Postal address:	Aminogatan 25	Telephone number:	+46 31 886344
Postcode:	431 53	E-mail address:	sales@kvaser.com

declare that the DoC is issued under our sole responsibility and belongs to the following product:

Product: Kvaser Mini PCI Express HS v2

**Object of the declaration** (identification of apparatus allowing traceability):

Product: Kvaser Mini PCI Express HS v2

Type: 73-30130-01038-3

**The object of the declaration described above is in conformity with the relevant Union harmonisation legislation:**

Electromagnetic Compatibility (EMC) Directive 2014/30/EU (Art. 6)

RoHS recast Directive 2011/65/EU (Art. 4.1)

**The following harmonised standards and technical specifications have been applied**

(title, date of standard/specification):

EN 55024 (2010)

EN 55032 (2012)

EN 61000-6-2 (2005)

EN 61000-6-3 (2007 + A1:2011)

EN 50581 (2012)


Signed for and on behalf of:

Mölndal

2019-12-05

Place of issue

Date of issue

  
Claes Haglund, Supply Chain and Quality Director

## 7.2 FCC Regulatory Compliance



Federal Communications Commission (FCC) Compliance Information Statement

**IDENTIFICATION OBJECT:**

Product: Kvaser Mini PCI Express HS v2

Type: 73-30130-01038-3

**APPLICABLE COMPLIANCE STATEMENTS:**

CFR Title 47 Part 15 §15.107, §15.109

This device complies with part 15 of the FCC Rules.

Operation is subject to the following two conditions:

- (1) This device may not cause harmful interference, and
- (2) this device must accept any interference received, including interference that may cause undesired operation.

**RESPONSIBLE PARTY (IN USA) NAME:**

Kvaser Inc.

23881 Via Fabricante, Suite 503

Mission Viejo, CA 92691

Internet contact: [support@kvaser.com](mailto:support@kvaser.com)



### **7.3 Patents, Copyrights and Trademarks**

All trademarks are the property of their respective owner. Windows is a registered trademark of Microsoft Corporation in the United States and other countries.

Adobe, the Adobe logo, and Reader are either registered trademarks or trademarks of Adobe Systems Incorporated in the United States and/or other countries.

MagiSync is a trademark of Kvaser AB.

DeviceNet is a trademark of Open DeviceNet Vendor Association, Inc.

NMEA 2000 is the registered trademark of the National Marine Electronics Association, Inc.

For information about Kvaser related CAN patents, see [www.kvaser.com/patent](http://www.kvaser.com/patent).

## 8 Document Revision History

Version history for document UG\_98204\_minipciexpress\_hs\_v2:

Revision	Date	Changes
1.0	2018-02-15	Initial version.
1.1	2018-05-03	Minor textual changes.
1.2	2018-08-28	Minor textual changes.
2.0	2018-10-15	Updated EU Regulatory Compliance.
2.1	2019-02-11	Minor textual changes.
2.2	2019-08-09	Url protocol updated.
2.3	2020-01-27	Added sdoc.
2.4	2020-08-19	Updated supported OS.
2.5	2021-09-09	Dropped mention of Hi-Speed CAN.
2.6	2022-04-01	Minor textual changes.
2.7	2023-02-20	Updated the Technical data table. Added section about intended use. Minor textual changes.
2.8	2024-01-23	Added firmware update instructions for Linux based operating systems.
2.9	2024-03-15	Updated Kvaser logo.